

Appendix A3

AVGAS - Results

A3.1

A3.1

Aviation Gasoline (AVGAS) - Monthly Results July '07 to May '08

Participant	Jul '07	Sep '07	Nov '07	Jan '08	Mar '08	May '08
BP Bulwer Isl - Engine No.2	103.2	101.5		104.0	104.0	
BP Kwinana - Engine No.2	104.0		104.7	103.5	104.8	101.4
IPL - Whangarei - Engine No.1			103.9			
Intertek Testing Services Clyde (NSW)	104.2	103.3	103.5	104.9	105.2	101.3
<i>No. of Results:</i>	3	2	3	3	3	2
<i>Consensus Median:</i>	104.00	102.40	103.90	104.00	104.80	101.35
<i>Normalised IQR:</i>	0.37	0.67	0.44	0.52	0.44	0.04
<i>Robust CV:</i>	0.4%	0.7%	0.4%	0.5%	0.4%	0.0%
<i>Minimum:</i>	103.2	101.5	103.5	103.5	104.0	101.3
<i>Maximum:</i>	104.2	103.3	104.7	104.9	105.2	101.4
<i>Range:</i>	1.0	1.8	1.2	1.4	1.2	0.1

§ - denotes an outlier result (i.e. a result for which $|z\text{-score}| > 3$).

AVGAS - Z-Scores July '07 to May '08

Participant	Jul'07	Sep'07	Nov'07	Jan'08	Mar'08	May'08
BP Bulwer Isl - Engine No.2	-1.11	-1.25		0.00	-1.11	
BP Kwinana - Engine No.2	0.00		1.11	-0.69	0.00	0.07
IPL - Whangarei - Engine No.1			0.00			
Intertek Testing Services Clyde (NSW)	0.28	1.25	-0.55	1.25	0.55	-0.07

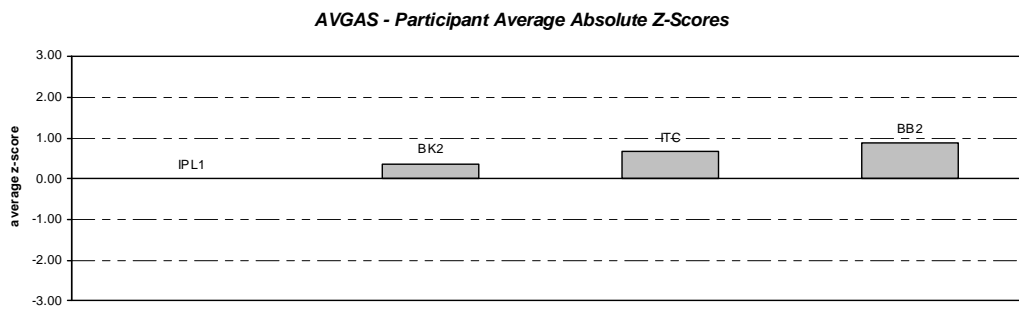
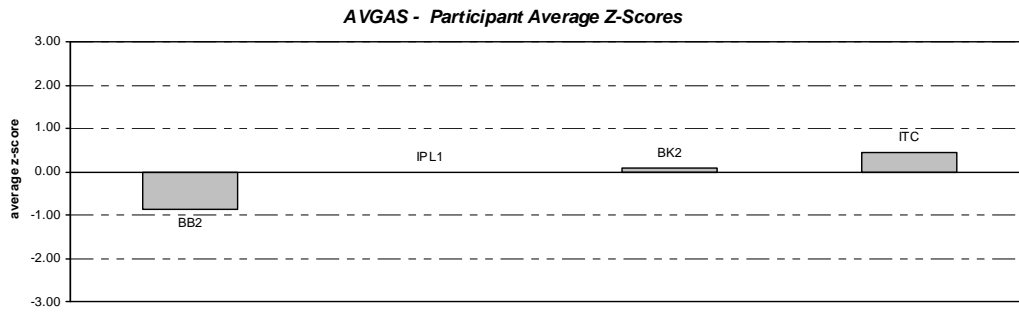
Outlier results are those for which $|z\text{-score}| > 3$ They are indicated in **bold**.

AVGAS - BTSF Deviations from Specification July '07 to May '08

Participant	Jul'07	Sep'07	Nov'07	Jan'08	Mar'08	May'08
BP Bulwer Isl - Engine No.2	1.1	-0.2		0.3	0.1	
BP Kwinana - Engine No.2	0.0		-0.1	-0.1	-0.2	-0.1
IPL - Whangarei - Engine No.1			0.0			
Intertek Testing Services Clyde (NSW)	0.2	0.1	0.2	0.0	0.2	0.1

"BTSF Deviation" = "Actual/Resultant BTSF value" - "BTSF Specification"

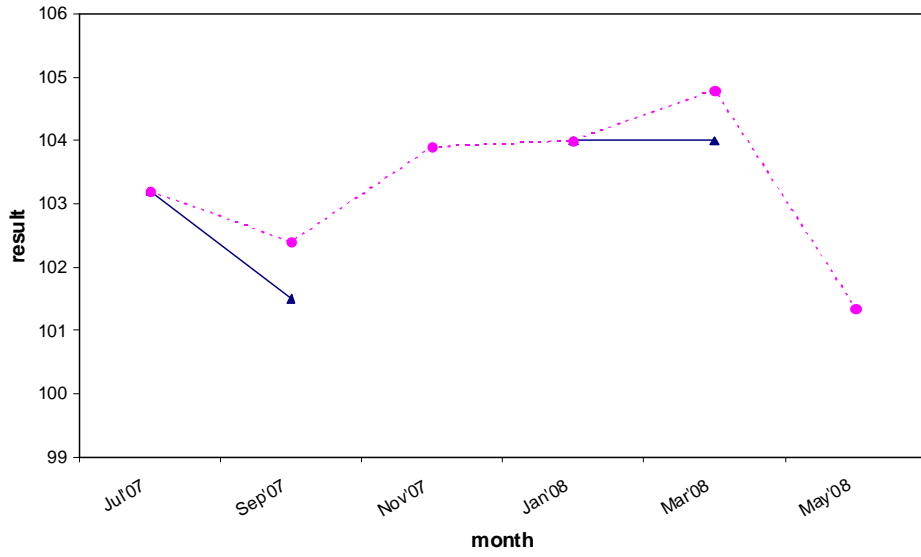
A3.2



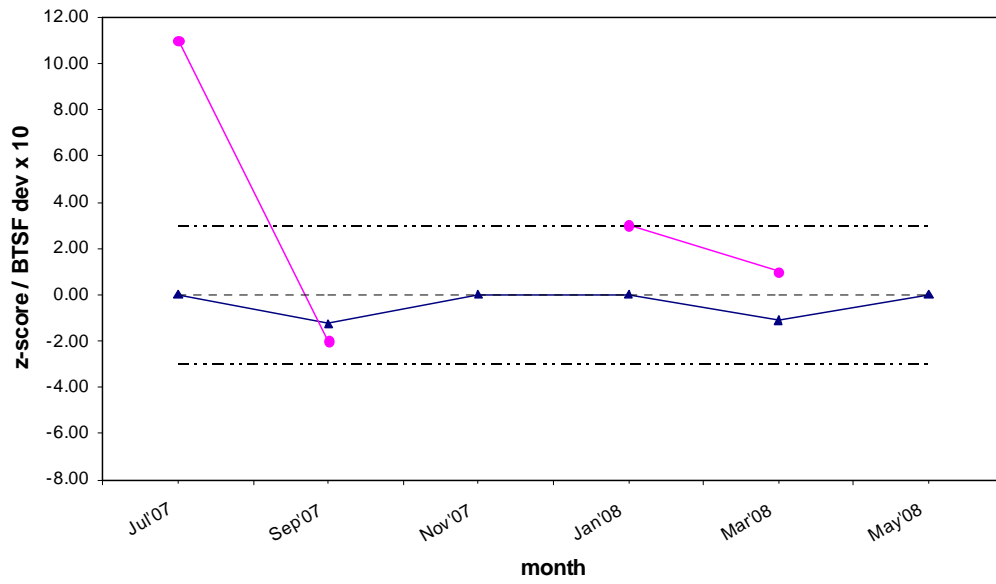
Average z-scores (top) and average absolute z-scores (bottom) shown for: BP - Bulwer Isl - No. 2 (BB2); BP - Kwinana - No. 2 (BK2); BP - Kwinana - No. 5 (BK5); IPL - Whangarei - No. 1 (IPL1); Intertek - Clyde (ITC)

A3.3

AVGAS - BP - Bulwer Engine No. 2

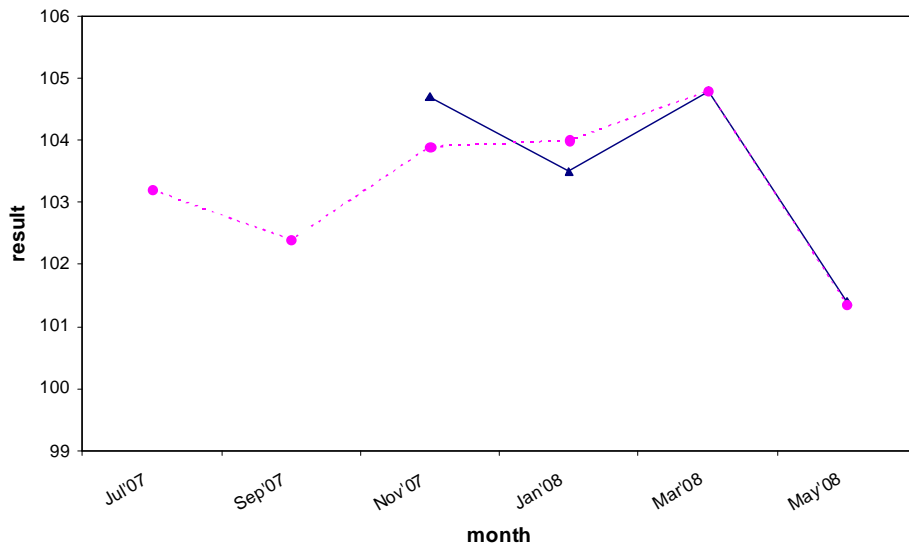


AVGAS - BP - Bulwer Engine No. 2

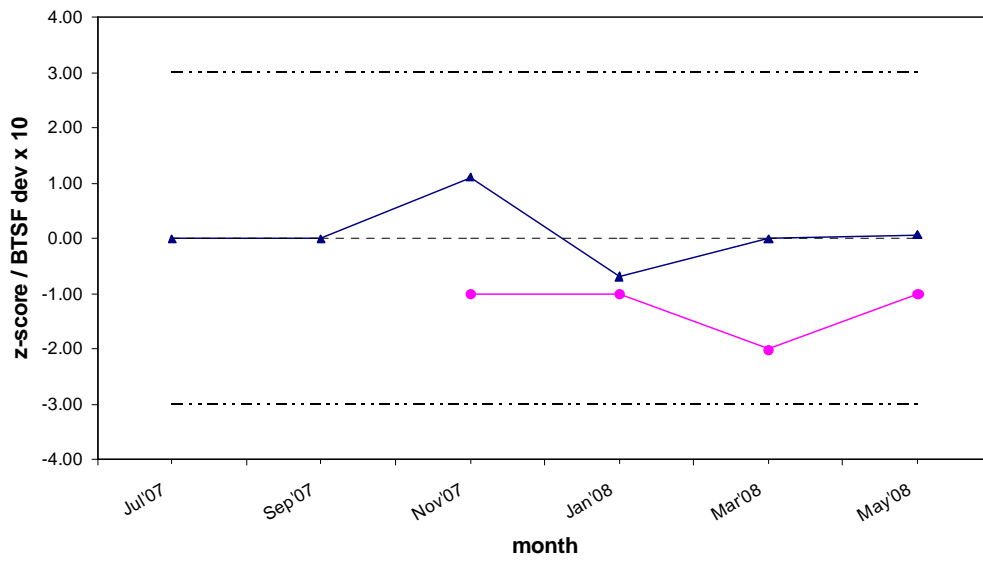


A3.4

AVGAS - BP - Kwinana Engine No. 2

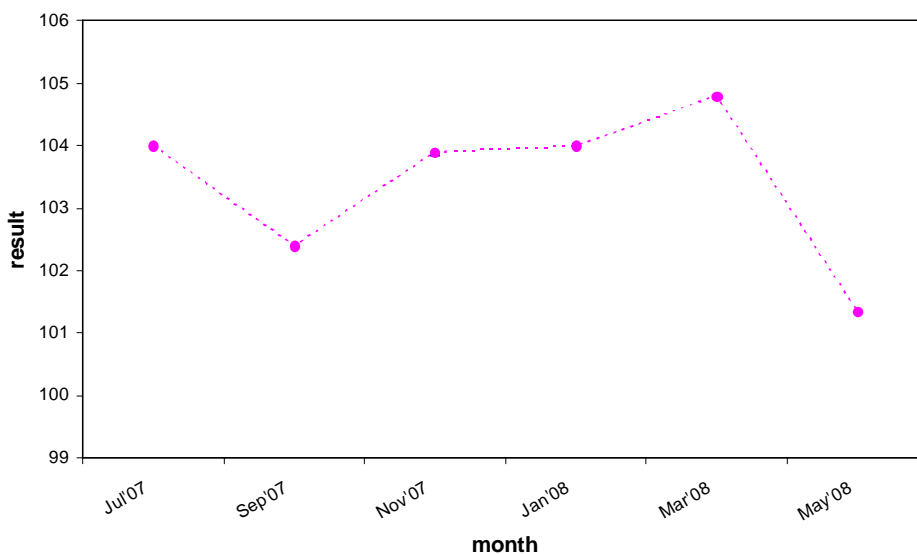


AVGAS - BP - Kwinana Engine No. 2

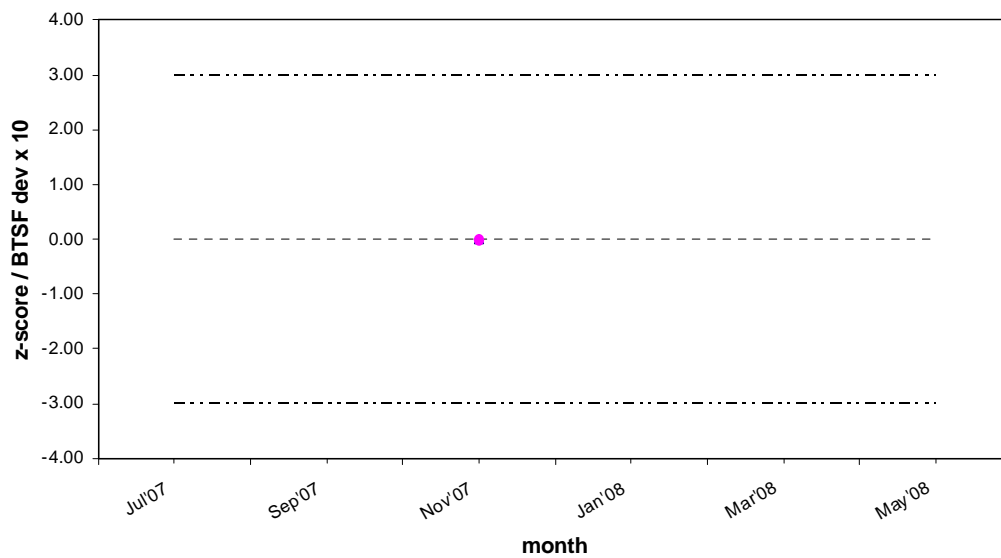


A3.5

AVGAS - IPL - Whangarei Engine No. 1

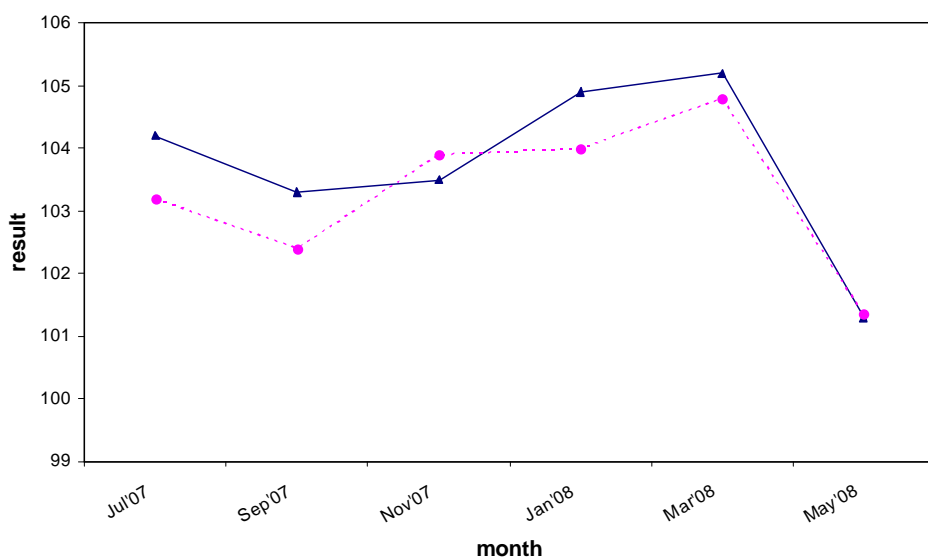


AVGAS - IPL - Whangarei Engine No. 1



A3.6

AVGAS - Intertek Testing Services - Clyde



AVGAS - Intertek Testing Services - Clyde

